

Results at a glance



Household questionnaire (aged 15 or above)

Number of domestic households	7 448
Number of respondents	16 655
Household response rate	73.3%



Health examination (aged 15 to 84)

Number of participants	2 072
Participation rate	55.2%

Self-reported viral hepatitis status (aged 15 or above)

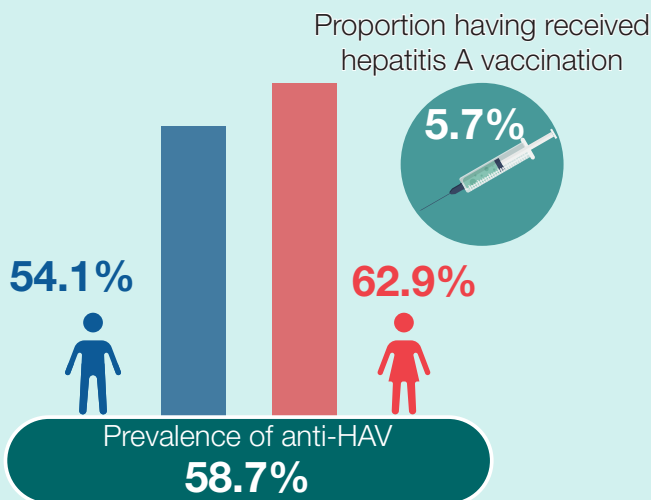


2.4% diagnosed with viral hepatitis
2.1% diagnosed with hepatitis B

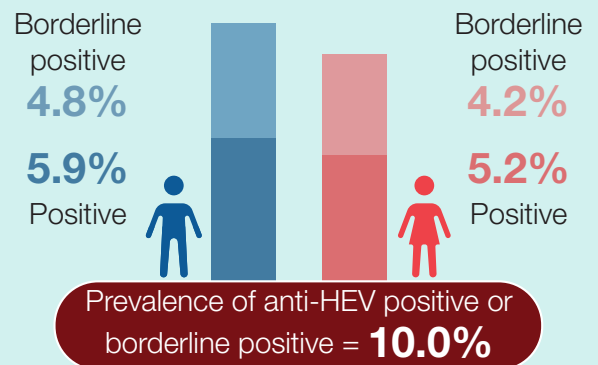
3 400 persons with hepatitis B diagnosed in the 12 months preceding the survey

Prevalence of viral hepatitis (aged 15 to 84)

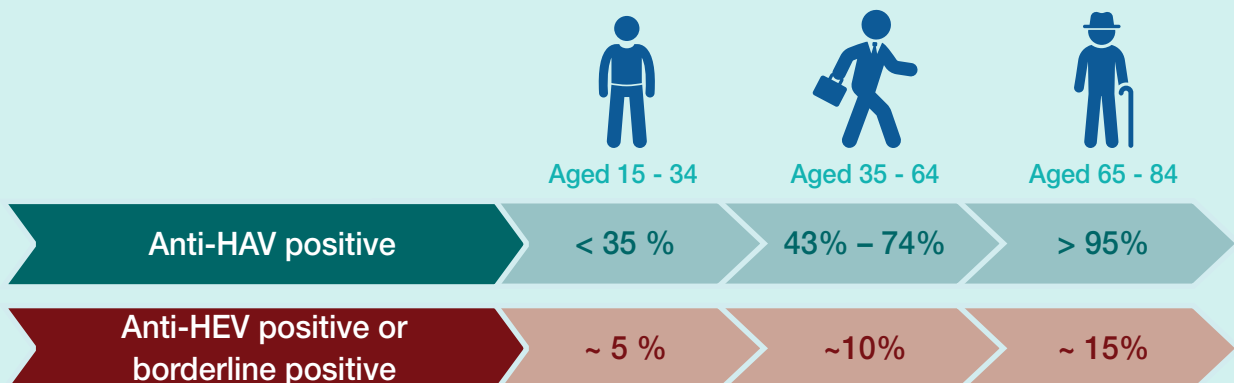
Hepatitis A



Hepatitis E



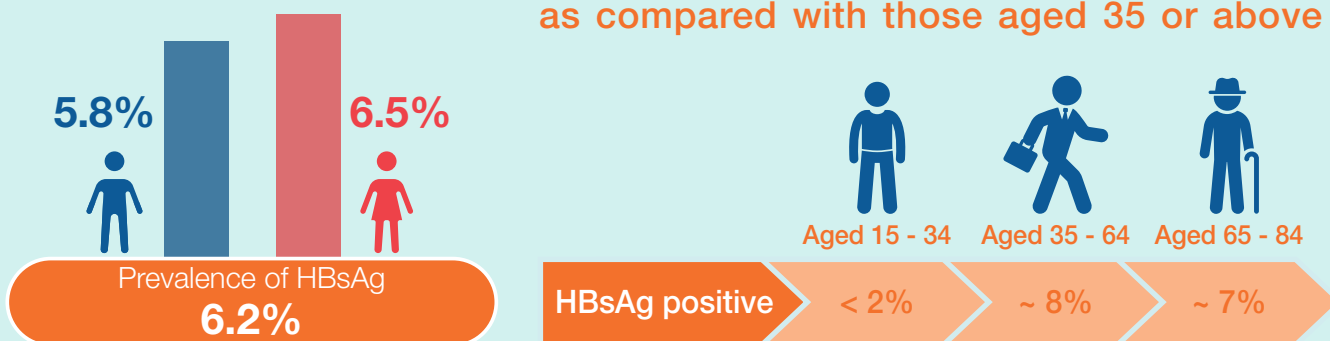
Prevalence of anti-HAV and anti-HEV increases with increasing age.



Prevalence of viral hepatitis (aged 15 to 84)

Hepatitis B

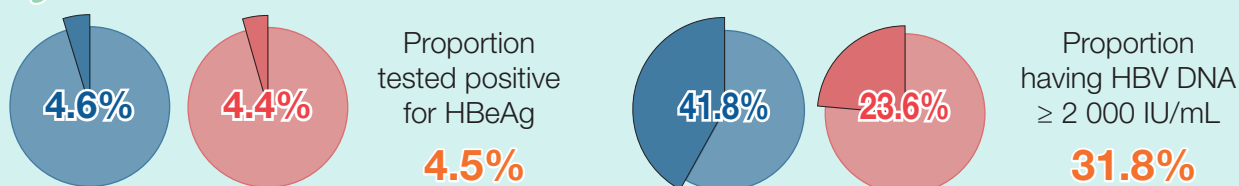
HBsAg prevalence was low in young adults, as compared with those aged 35 or above



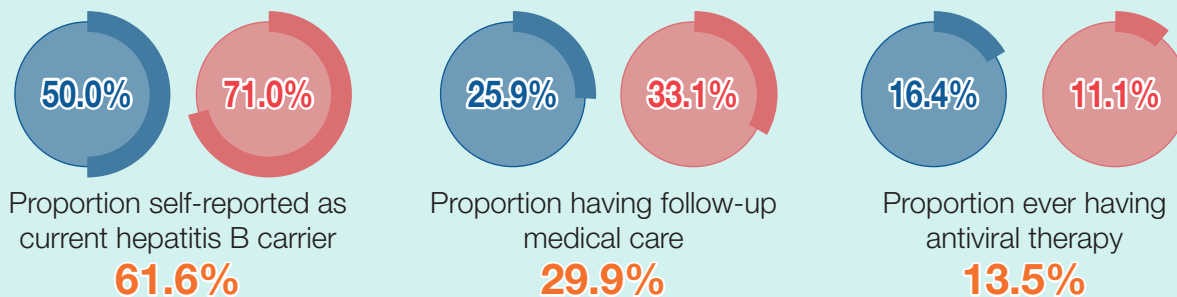
Among HBsAg+ participants



Markers of HBV replication



Care continuum



Hepatitis C

