

# Results at a glance



## Household questionnaire (aged 15 or above)

Number of domestic households	<b>7 448</b>
Number of respondents	<b>16 655</b>
Household response rate	<b>73.3%</b>



## Health examination (aged 15 to 84)

Number of participants	<b>2 072</b>
Participation rate	<b>55.2%</b>

### Self-reported viral hepatitis status (aged 15 or above)



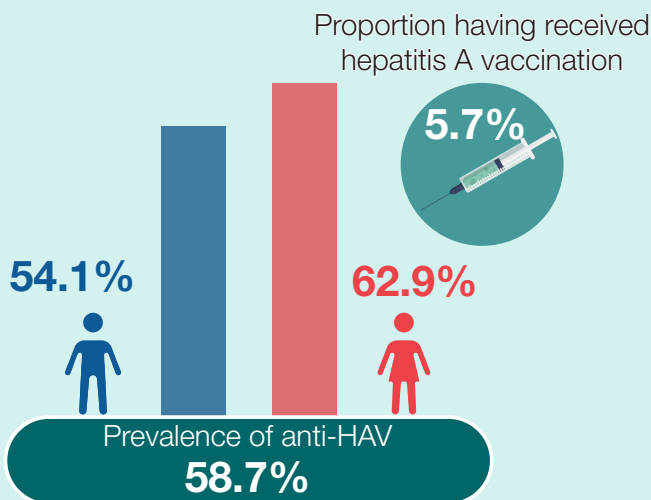
**2.4%** diagnosed with viral hepatitis  
**2.1%** diagnosed with hepatitis B

**3 400**

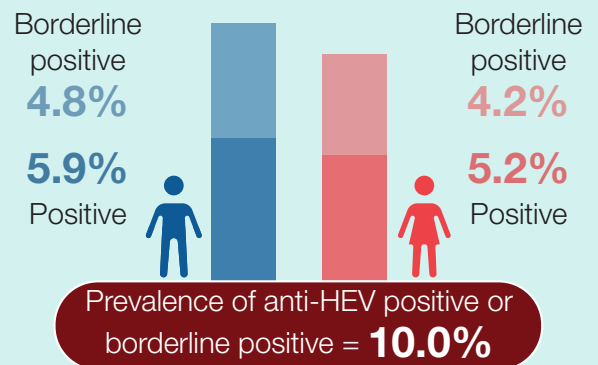
persons with hepatitis B diagnosed in the 12 months preceding the survey

### Prevalence of viral hepatitis (aged 15 to 84)

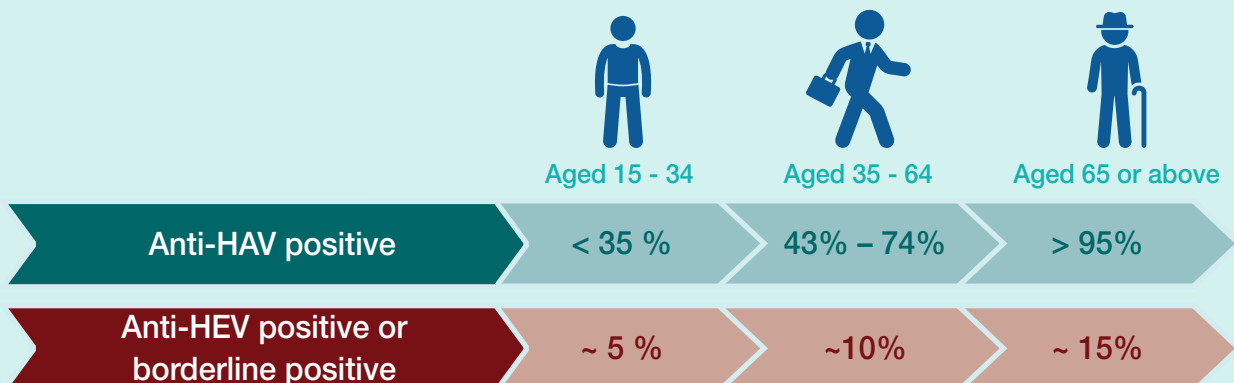
#### Hepatitis A



#### Hepatitis E



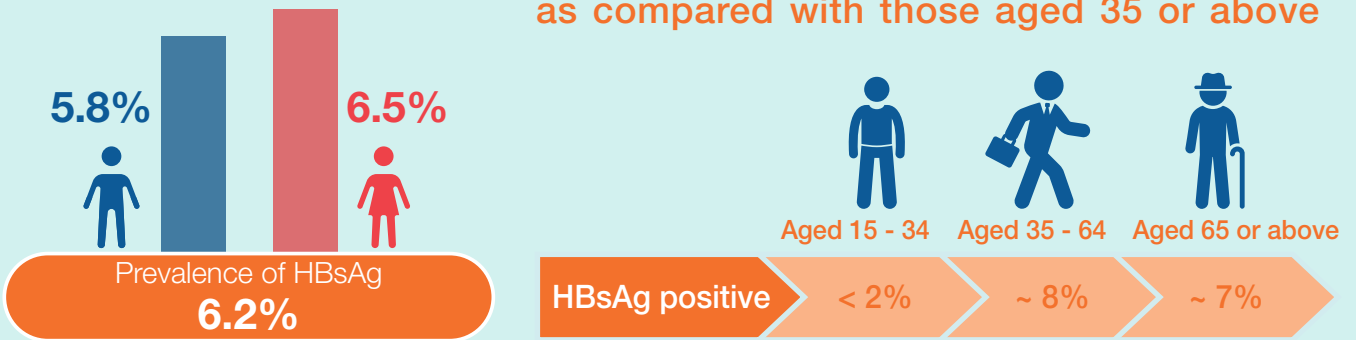
Prevalence of anti-HAV and anti-HEV increases with increasing age.



# Prevalence of viral hepatitis (aged 15 to 84)

## Hepatitis B

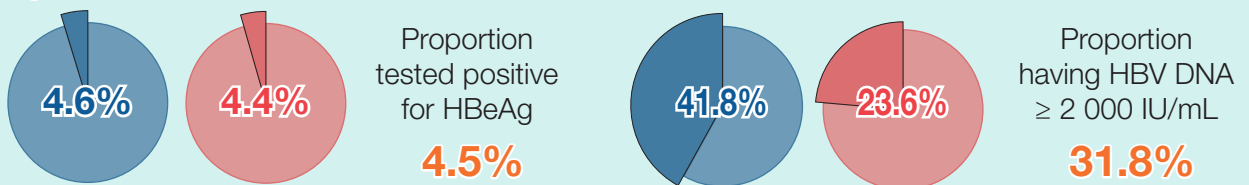
HBsAg prevalence was low in young adults, as compared with those aged 35 or above



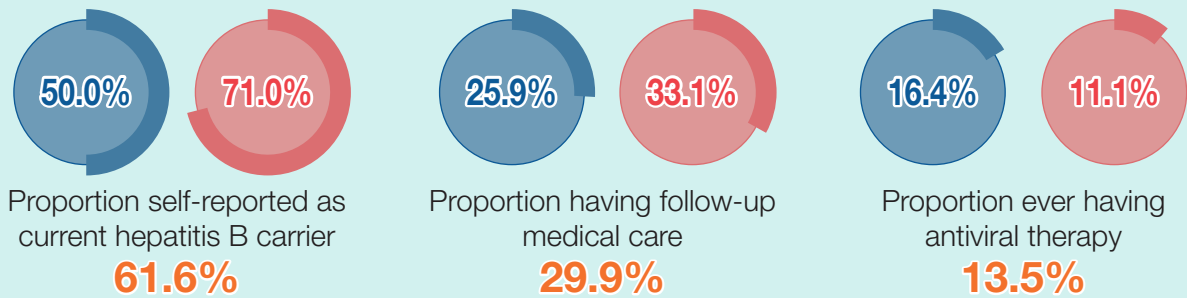
### Among HBsAg+ participants



#### Markers of HBV replication



#### Care continuum



## Hepatitis C

